

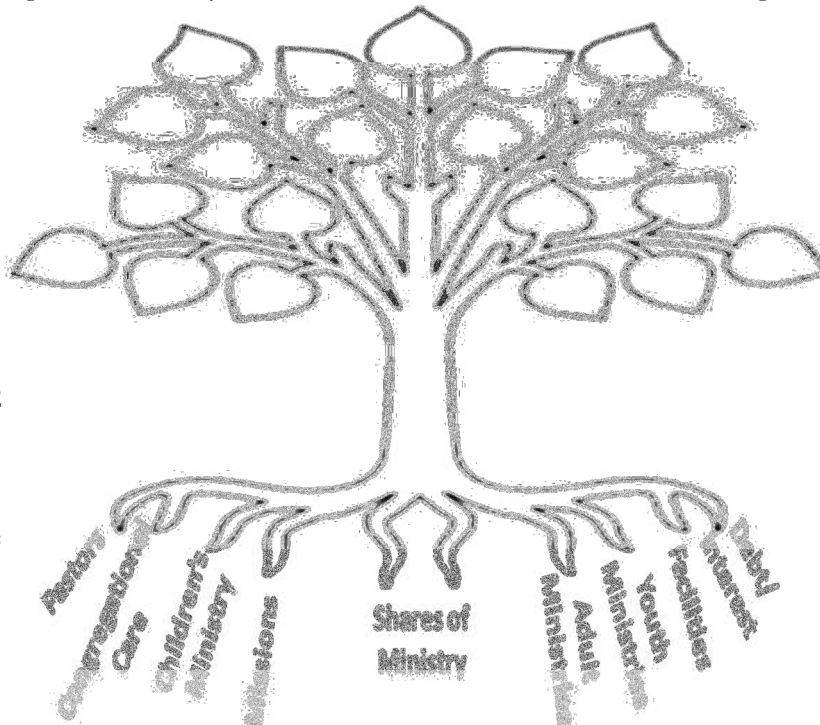
GROUNDING IN FAITH -- GROWING TO SERVE

Over the last few years, the Finance committee has prayerfully reviewed and considered the actual annual giving, attendance trends, and the results of the budget pledge process to set the subsequent years' total budget. These annual budget decisions were made based mostly on these **Facts**. But, despite our best intentions, FUMC has only reached our budgeted giving once in the last 5 years. Balancing the budget in those years came from cost cutting, reductions in missions and ministry programs, and reducing debt payments.

With so many opportunities and needs for various ministry and mission programs in 2015, the Finance committee and the Administrative Board reached beyond their historical comfort zone and set the FUMC 2015 budget based mostly on **Faith**. In fact, we have stretched the budget about 5% beyond what facts

that we would
We need your
gap.

The
Committee of
to announce
2015 Unified
stewardship
**Grounded in
to Serve**. The
gin on April 12
the various
FUMC sup-
unified budget
throughout the
(from April
ber), we will
portion (Root)
ex-plain where
money is spent



would sug-
gest
nor-mally receive.
help to bridge that

Finance
FUMC is pleased
the initiation of the
Budget special
cam-paign called
Faith – Growing
campaign will be-
and will showcase
minis-tries of
ported by the 2015
on a weekly basis
year. Each month
through Decem-
feature a different
of our budget and
and how that
to help grow and

bear fruit for our Church (Tree). We will watch our tree grow every week as pastors, staff, committee members, and congregational leaders discuss and explain the wonderful ministry/mission opportunities during a special **“Stewardship Seconds”** portion of each wor-ship service.

During April’s “Stewardship Seconds”, we will concentrate on the portion of our annual budget that goes to the conference as “Shares of Ministry”. From local missions (such as the Children’s Home, Neighborhood Center, and the Camping Program) to Global missions (such as UMCOR and Africa University), our shares of ministry combined with other United Methodist Churches help fund many valuable missions. Our Shares of Ministry also help fund the conference and global connectional ministries such as Discovery Place Resource Center, training and counseling programs for pastors and church staff, Stewardship Foundation, as well as all of the costs required to manage the local, national, and international leadership of the United Methodist Church. Starting in mid-April, be sure to listen and watch as we water and nourish the “Shares of Ministry Root”. If we have roots **“Grounded in Faith”**, we will be able to **“Grow to Serve”**.